

SUSTAINABLE DECORATION

ONE EXAMPLE OF COLLABORATION
TO INTRODUCE AND REALIZE NON-AUTOMOTIVE MATERIALS

Foam Expo Europe, Stuttgart

November 2024



A close-up photograph of a young girl with long dark hair and numerous freckles. She is smiling gently, with her eyes partially closed, and holding a grey, fuzzy stuffed animal against her face. Her hand is visible at the top of the frame, resting on the animal. The background is a soft-focus outdoor scene with a blue sky and distant hills.

It's the little things that mean a lot

REF

cycle.
use.
new.
think.

RE think.

REalized.

A landscape photograph showing a thick layer of white mist or fog filling a valley. In the distance, a small town and a tall tower are visible on a hill under a pale, hazy sky.

Mist

A close-up photograph of pine tree branches at night. The branches are dark green, and some needles are highlighted by a warm, golden light, possibly from a low sun or moon.

Pine

A photograph of a calm lake reflecting the surrounding landscape. In the background, there are dark, silhouetted mountains under a light sky. A small wooden dock is visible on the right side of the lake.

Breeze

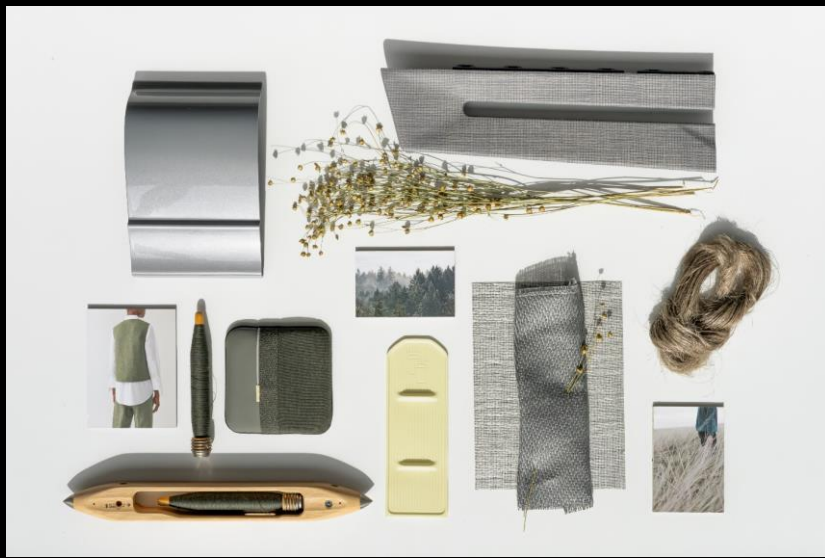
A close-up photograph of a dark, textured fabric, possibly a piece of indigo-dyed cloth. The fabric has a wavy, ribbed pattern and is set against a dark background.

Indigo

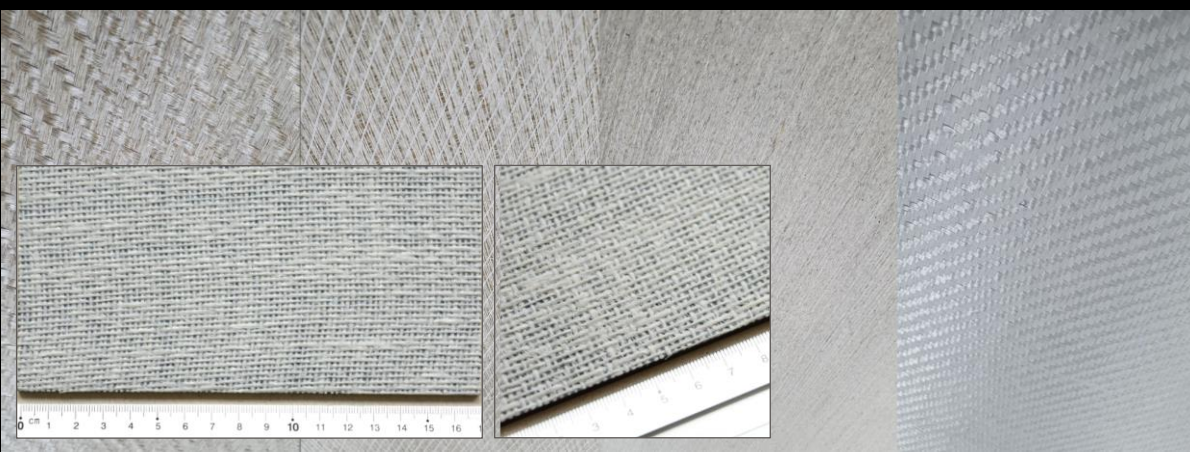
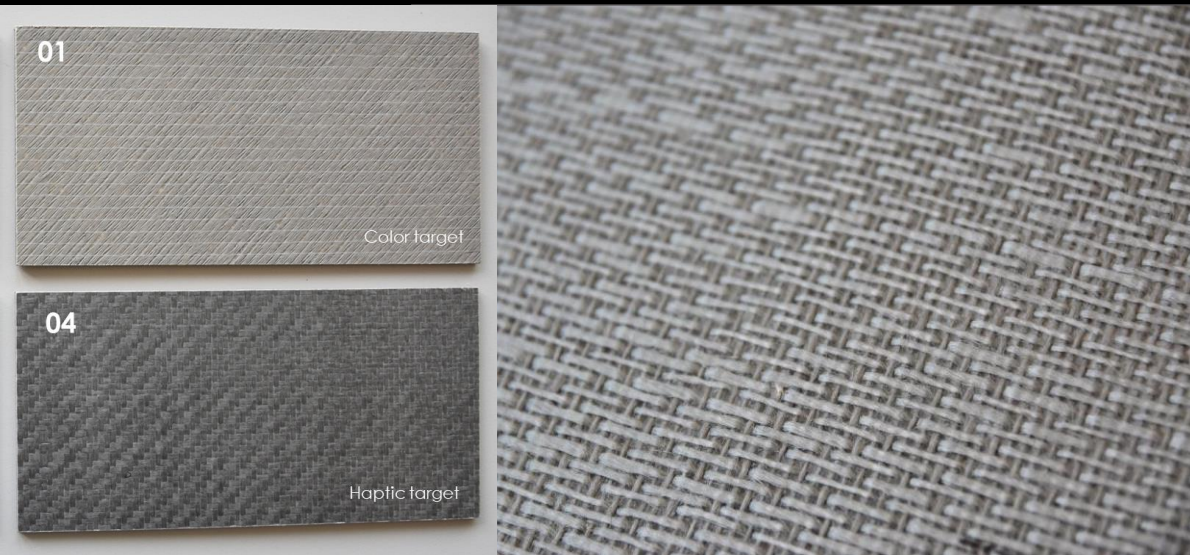
Mist







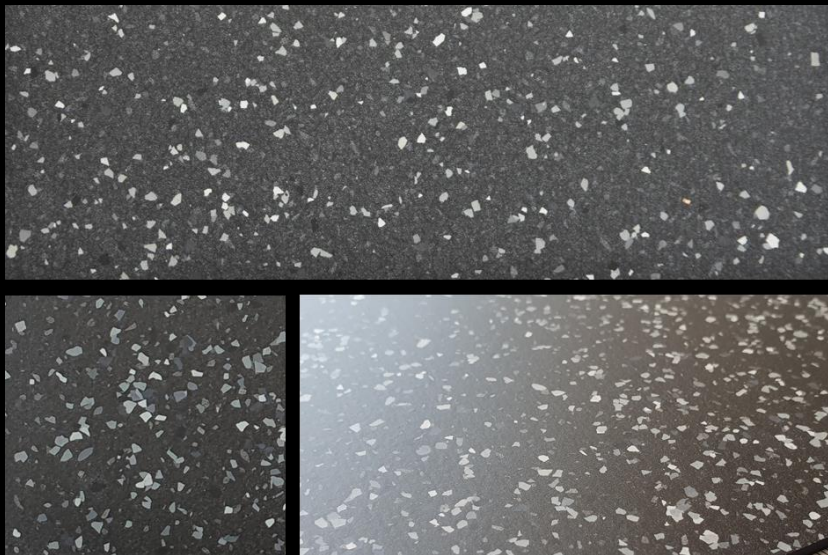
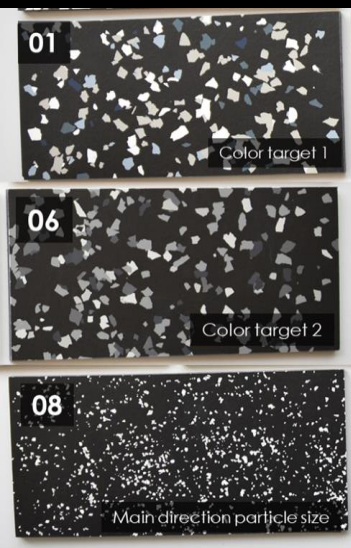




Breeze

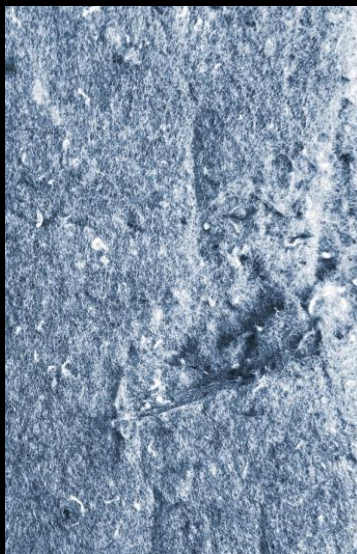






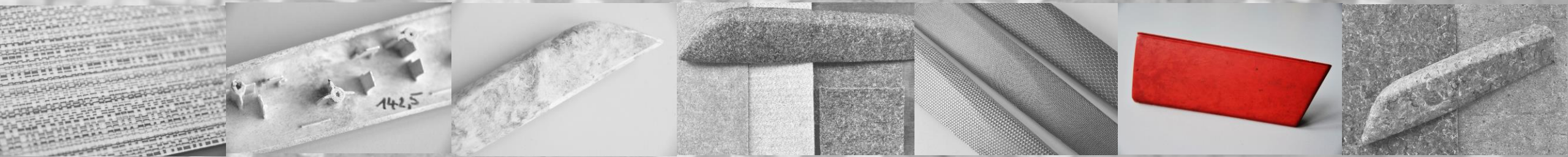
Indigo







Thank you



NBHX

TRIM GROUP